

F1000 Volatility Opportunity Fund

Investment Objectives: A volatility arbitrage strategy designed to produce returns in excess of 50% per year, volatility of 25%-30% and a Sharpe ratio greater than 2. The strategy is designed to have low beta and be uncorrelated with equity and volatility indices.

Methodology: The strategy is based on proprietary econometric models that produce forecasts of future volatility of exceptional accuracy. Sophisticated option pricing models are used to identify arbitrage opportunities and construct optimal long/short volatility portfolios.

Management: Successful money management professionals with 20+ years of trading experience oversee portfolio construction and maintenance using state of the art proprietary computer systems with a constant monitoring of risk models and performance optimization to maintain predetermined performance targets.

Testing: This page describes the actual performance of the Strategic Volatility Strategy from Oct 2002 to June 2004, and pro-forma results thereafter.

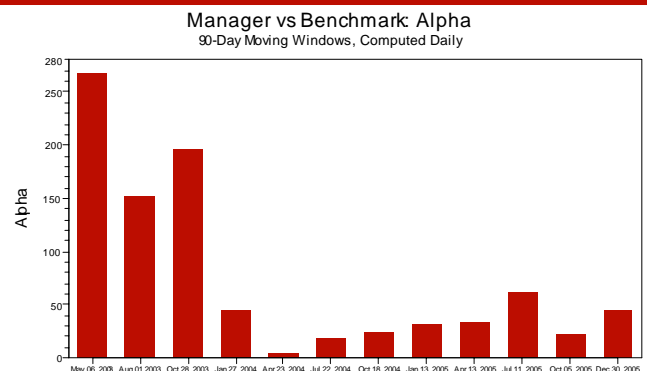
Summary Statistics

	Return	Volatility	Sharpe Ratio	Downside Risk	Best Period	Worst Period	Alpha	Beta	Corr	Info Ratio
Fund	207.34	57.66	3.58	34.15	36.93	-35.39	257.54	0.01	0.00	3.25
Index	13.87	14.67	0.87	9.56	4.72	-3.53				

Returns

										Oct	Nov	Dec	2002
2002										-0.94	-0.17	9.04	7.83
Fund										8.64	5.71	-6.03	8.00
Index													8.00
2003	Jan	Feb	Mar	Apr	May	Jun	Jul	Aug	Sep	Oct	Nov	Dec	2003
Fund	-14.56	130.88	8.94	16.45	15.72	46.75	18.72	48.85	10.96	23.69	16.53	-10.31	977.36
Index	-2.74	-1.70	0.84	8.10	5.09	1.13	1.62	1.79	-1.19	5.50	0.71	5.08	26.38
2004	Jan	Feb	Mar	Apr	May	Jun	Jul	Aug	Sep	Oct	Nov	Dec	2004
Fund	-4.06	8.25	3.29	0.19	0.56	5.17	2.79	8.00	5.42	11.57	1.14	9.46	64.31
Index	1.73	1.22	-1.64	-1.68	1.21	1.80	-3.43	0.23	0.94	1.40	3.86	3.25	8.99
2005	Jan	Feb	Mar	Apr	May	Jun	Jul	Aug	Sep	Oct	Nov	Dec	2005
Fund	7.47	-1.11	11.44	8.63	15.33	6.27	5.64	-5.26	4.72	15.47	1.23	7.80	108.27
Index	-2.53	1.89	-1.91	-2.01	3.00	-0.01	3.60	-1.12	0.69	-1.77	3.52	-0.10	3.00

Cumulative Net Return and Alpha



Style and Allocation

